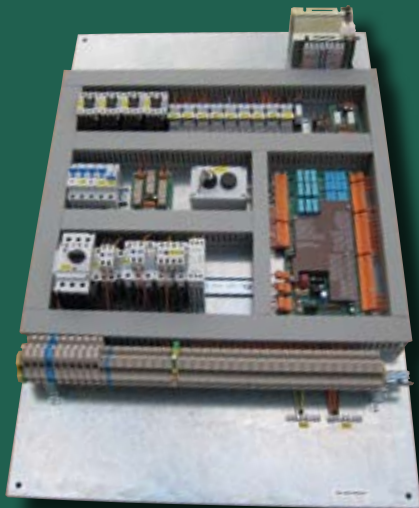


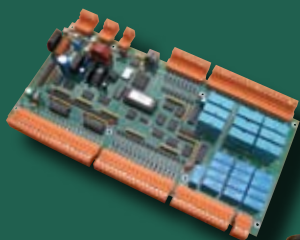
D-TYPE lift controller



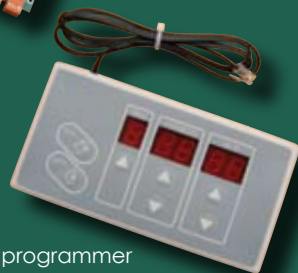
D type hydraulic control panel



D type two speed control panel



D type module



D type programmer

TECHNICAL FEATURES

Maximum number of served floors:

- 6 full up and down collective
- 11 full up and down collective with extension
- 9 down collective
- 15 down collective with extension
- 16 universal control

Maximul number of elevators working in group:

- 2

Supported elevator systems:

- electric two speed
- electric VVVF or ACVV
- hydraulic

Maximal elevator speed:

- 1,5 m/s

Positioning possibilities:

- switches for shaft information
- switches for pre-opening
- switches for relevelling

Number of doors served:

- 1

Door types served:

- all types

User's interface:

- built in LED diode for position indicator and error signalisation
- built in RS 232 line for programming

Real time clock:

- no

Serial output for indicator and voice module:

- 1 x line with SSL2 protocol

Other important characteristics:

- 19 programmable timers
- 76 programmable parameters
- error table and last events table in EEPROM circuit
- all inputs equipped with LED diodes
- all connections made with plugs

Compliance with standards:

- EN 81-1
- EN 81-2
- EN 81-72
- lift directive EC 95/16
- AS 1735.2
- EN 12015
- EN 12016
- EN 50178